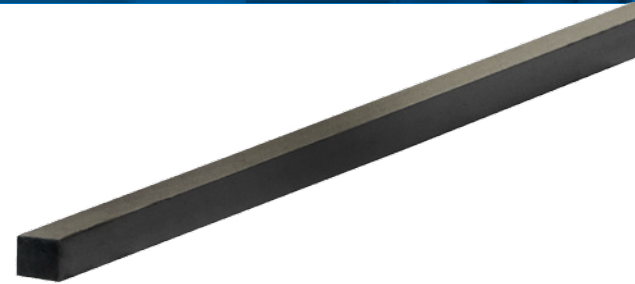




• Steel square



Theoretical Weights Table

Fraction	Size		kg/m
	mm	inche	
3/8	9.5	0.375	0.71
1/2	12.7	0.5	1.26
5/8	15.9	0.625	1.97
3/4	19.1	0.75	2.84
7/8	22.2	0.875	3.87
1	25.4	1	5.06
1 1/8	28.6	1.125	6.4
1 1/4	31.8	1.25	7.9
1 1/2	38.1	1.50	11.39
1 3/4	44.5	1.75	15.49
2	50.8	2	20.23