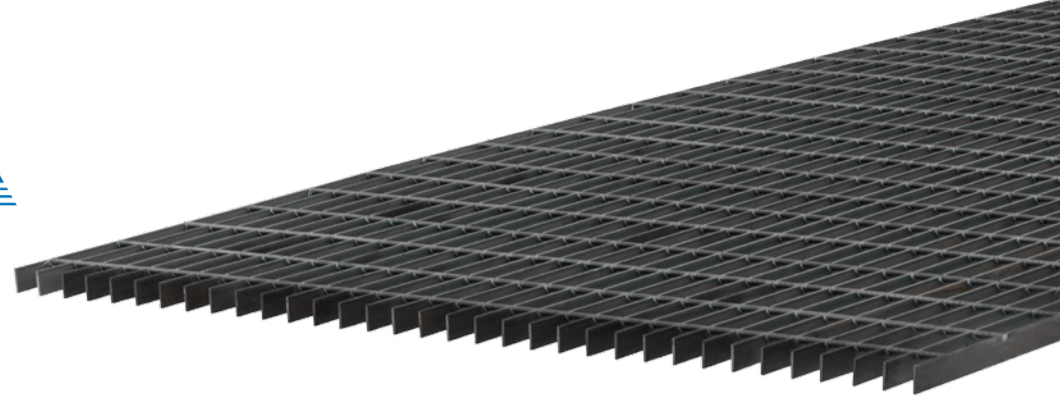




serviacero
comercial



• Light-Duty Grating

Model		W19-100			Carbon Steel									
Bearing Bar (in Inche)	Width (in mm)	Thickness (in mm)	Load	Kg / m ² -Cm / Deflection in mm										
				50	75	100	125	150	175	200	225	250	275	
3/4 X 1/8	19.05	3.175	U	2183	1158	656	416							
	19.05	3.175	Du	1.491	3825	6.819	10.627							
	19.05	3.175	C	604	431	324	259							
	19.05	3.175	Dc	1.184	3.059	5.459	8.508							
3/4 X 3/16	19.05	4.762	U	3276	1739	984	622							
	19.05	4.762	Du	1491	3.825	6.819	10.627							
	19.05	4.762	C	908	646	486	387							
	19.05	4.762	Dc	1.184	3.059	5.459	8.508							
1 x 1/8	25.4	3.175	U	3886	2060	1166	739	512	377					
	25.4	3.175	Du	1.112	2.862	5.123	7.974	11.48	15.612					
	25.4	3.175	C	1076	766	576	460	383	329					
	25.4	3.175	Dc	0.921	2.296	4.088	6.373	9.168	12.498					
1 X 3/16	25.4	4.762	U	5821	3090	1748	1108	769	563					
	25.4	4.762	Du	1.112	2.862	5.123	7.974	11.48	15.612					
	25.4	4.762	C	1611	1150.125	684	689	674	492					
	25.4	4.762	Dc	0.921	2.296	4.088	6.373	9.168	12.498					
1 1/4 X 1/8	31.75	3.175	U	6065	3222	1823	1155	800	588	447				
	31.75	3.175	Du	0.921	2.296	4.088	6.373	9.168	12.498	16.293				
	31.75	3.175	C	1681	1197	901	717	598	513	448				
	31.75	3.175	Dc	0.744	1.827	3.274	5.108	7.341	9.99	13.052				
1 1/4 X 3/16	31.75	4.762	U	9097	4829	2733	1730	1199	882	672				
	31.75	4.762	Du	0.921	2.296	4.088	6.373	9.168	12.498	16.293				
	31.75	4.762	C	2519	1797	1351	1077	896	768	671				
	31.75	4.762	Dc	0.744	1.827	3.274	5.108	7.341	9.99	13.052				
1 1/2 X 1/8	38.1	3.175	U	8736	4635	2625	1660	1150	847	648	510	415	340	
	38.1	3.175	Du	0.758	1.925	3.415	5.321	7.638	10.421	13.572	17.189	21.225	25.675	
	38.1	3.175	C	2419	1725	1296	1034	860	738	645	573	516	469	
	38.1	3.175	Dc	0.614	1.53	2.731	4.254	6.111	8.331	10.877	13.766	16.996	20.519	
1 1/2 X 3/16	38.1	4.762	U	13106	6955	3935	2492	1726	1271	969	768	620	510	
	38.1	4.762	Du	0.758	1.925	3.415	5.321	7.638	10.421	13.572	17.189	21.225	25.675	
	38.1	4.762	C	3630	2587	1945	1551	1291	1107	968	860	775	704	
	38.1	4.762	Dc	0.614	1.53	2.731	4.254	6.111	8.331	10.877	13.766	16.996	20.519	
1 3/4 X 3/16	44.45	4.762	U	17830	9468	5356	3390	2349	1729	1320	1042	844	694	
	44.45	4.762	Du	0.653	1.653	2.923	4.549	6.552	8.927	11.652	14.746	18.2	22	
	44.45	4.762	C	4938	3522	2647	2111	1758	1507	1317	1171	1054	957	
	44.45	4.762	Dc	0.516	1.308	2.341	3.639	5.246	7.128	9.322	11.794	14.561	17.584	
2 X 3/16	50.8	4.762	U	23289	12364	6996	4428	3069	2257	1723	1360	1104	908.003	
	50.8	4.762	Du	0.556	1.431	2.561	3.989	5.742	7.812	10.179	12.901	15.928	19.243	
	50.8	4.762	C	6449	4061	3457	2756	2295	1968	1720	1530	1376	1250	
	50.8	4.762	Dc	0.451	1.159	2.044	3.186	4.584	6.242	8.157	10.318	12.742	15.389	
2 1/4 X 3/16	57.15	4.762	U	29480	15648	8857	5605	3883	2857	2179	1724	1398	1151	
	57.15	4.762	Du	0.491	1.282	2.264	3.537	5.101	6.938	9.065	11.476	14.16	17.099	
	57.15	4.762	C	8163	5822	4376	3488	2904	2491	2177	1935	1742	1582	
	57.15	4.762	Dc	0.386	1.011	1.823	2.836	4.088	5.546	7.249	9.16	11.324	13.68	
2 1/2 X 3/16	63.5	4.762	U	36395	19319	10934	6920	4795	3528	2692	2127	1724	1418	
	63.5	4.762	Du	0.451	1.159	2.044	3.186	4.584	6.242	8.157	10.318	12.742	15.389	
	63.5	4.762	C	10078	7188	5402	4307	3586	3075	2687	2389	2150	1953	
	63.5	4.762	Dc	0.372	0.913	1.642	2.546	3.672	5.001	6.526	8.251	10.19	12.327	

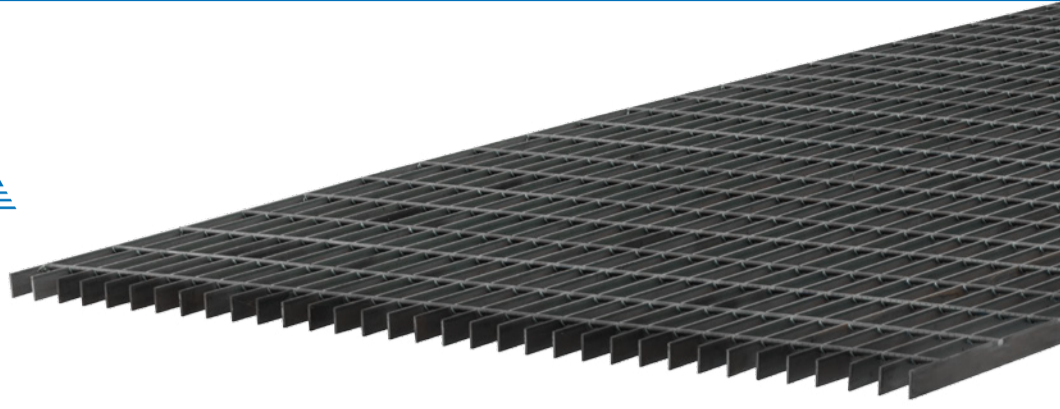
U: Permissible uniform load (in kg/m²)
C: Permissible concentrated load (in kg/m²)

Du: Deflection with uniform load (mm)
Dc: Deflection with concentrated load (mm)

On a to othed rack, consider a cant 1/4" greater than that required to support the indicated load.
NOTE: We invite you to consult us the feasibility of your project.



serviacero
comercial



• Light-Duty Grating

Carbon Steel											
Product		W11-50	W11-100	W13-50	W13-100	W15-50	W15-100	W16-50	W16-100	W19-50	W19-100
Bearing Bar Spacing		17.46	17.46	20.64	20.64	23.81	23.81	24.61	24.61	30.16	30.16
Cross Bar Spacing		50	100	50	100	50	100	50	100	50	100
Thickness	width	kg/m	kg/m	kg/m	kg/m	kg/m	kg/m	kg/m	kg/m	kg/m	kg/m
1/8	3/4	32.73	30.13	28.43	25.85	25.63	23.02	25.2	22.57	21.33	18.74
	1	41.91	39.31	36.19	33.6	32.44	29.83	31.85	29.22	26.71	24.12
	1 1/4	51.09	48.49	43.94	41.36	39.24	36.63	38.5	35.87	32.09	29.5
	1 1/2	60.27	57.67	51.7	49.11	46.05	43.44	45.14	42.51	37.48	34.88
3/16	3/4	46.5	43.9	40.06	37.48	35.84	33.23	35.17	32.54	29.4	26.81
	1	60.27	57.67	51.7	49.11	46.05	43.44	45.12	42.51	37.48	34.88
	1 1/4	74.03	71.44	63.33	60.75	56.25	53.65	55.11	52.48	45.55	42.95
	1 1/2	87.8	85.21	74.96	72.38	66.46	63.86	65.09	62.45	53.62	51.02
	1 3/4	102.86	99.62	87.87	84.65	77.96	74.71	76.36	73.08	62.98	59.74
	2	116.63	113.39	99.51	96.28	88.17	84.92	86.33	83.05	71.05	67.81
	2 1/4	130.4	127.16	111.14	107.92	98.38	95.13	96.3	93.02	79.12	75.88
2 1/2	144.17	140.93	122.77	119.55	108.59	105.34	106.27	102.99	87.19	83.95	